

*The effective technology
and complex services*

Farmet[®]
Oil & Feed Tech

COMPLEX SOYBEAN PROCESSING



**GET YOUR OWN FEED BY EFFICIENT
SOYBEAN PROCESSING**

OIL & FEED TECH



**HEXANE FREE
TECHNOLOGIES**[®]

WHAT CAN WE OFFER?

Process soybeans mechanically, by environmentally friendly method with Farmet! (Extrusion, extrusion pressing including dehulling and heat recovery system)

= **HEXANE FREE TECHNOLOGIE FARMET**

- The most economical as well as the most efficient technology
- The received feed has optimal ratio of fat and protein suitable for all categories of farm animals
- You can produce the feed with the lowest costs
- The technology has the lowest operational costs



SOYA – A PLANT OF FUTURE

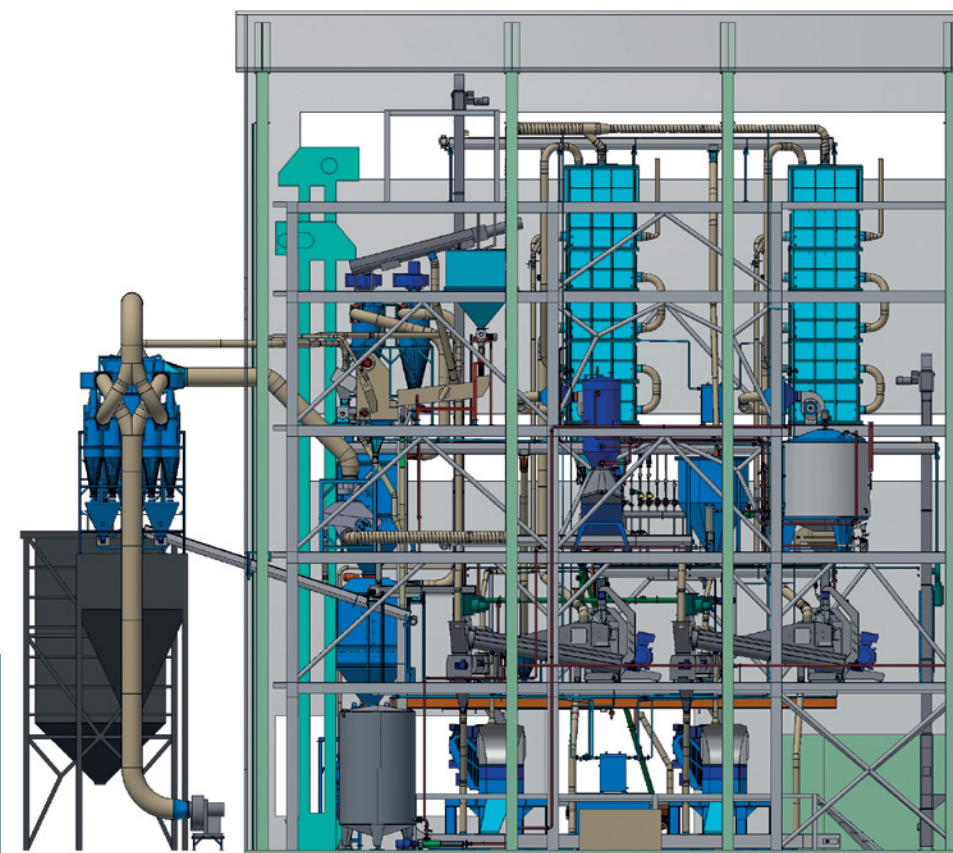
- IRREPLACEABLE PROTEIN SOURCE
- HIGH PROTEIN CONTENT WITH BALANCED RATIO OF AMINO ACIDS
- WORLD-WIDE INCREASE IN SOWN AREAS AND PRODUCTION
- GROWING DEMAND FOR SOY PRODUCTS

Organic Farming



WITH OUR TECHNOLOGIES YOU RECEIVE VEGETABLE OIL AND FEED OF HIGH QUALITY, WITH NO CHEMICAL ADDITIVES (AND WITHOUT CARCINOGENIC HEXANE).

FARMET HEXANE-FREE TECHNOLOGY IS THE MOST AFFORDABLE AS WELL AS THE MOST EFFICIENT TECHNOLOGY ON THE MARKET



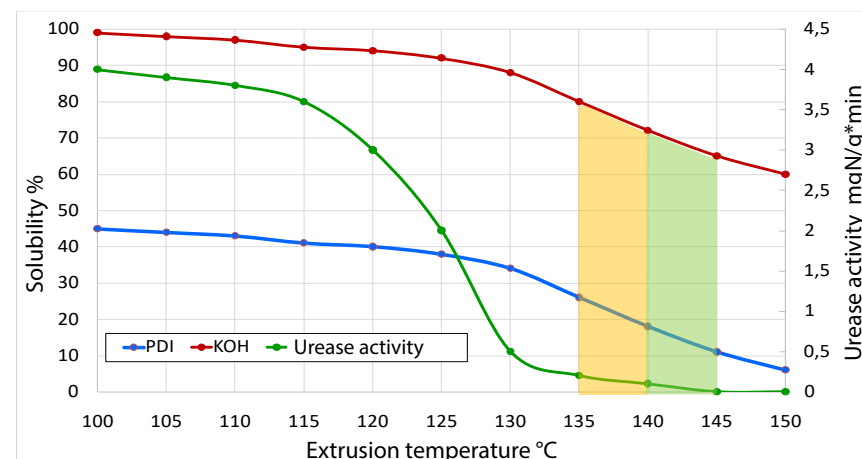
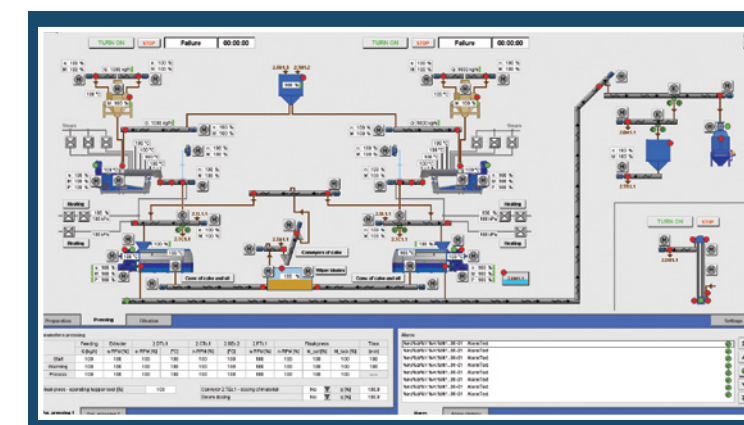
SOYBEAN PROCESSING PLANT
– 100 000 MT PER YEAR

- **TECHNOLOGY EP1**
(SINGLE-LEVEL EXTRUSION PRESSING)
- **PRODUCTS:**
 - SOY OIL
 - SOY CAKE
 - FULL-FAT SOYA
- **RECU - UNIQUE PATENTED SYSTEM OF WASTE-VAPOUR RECOVERY**



BYPASS PROTEIN

DUE TO HIGH AUTOMATION LEVEL OF FARMET TECHNOLOGIES

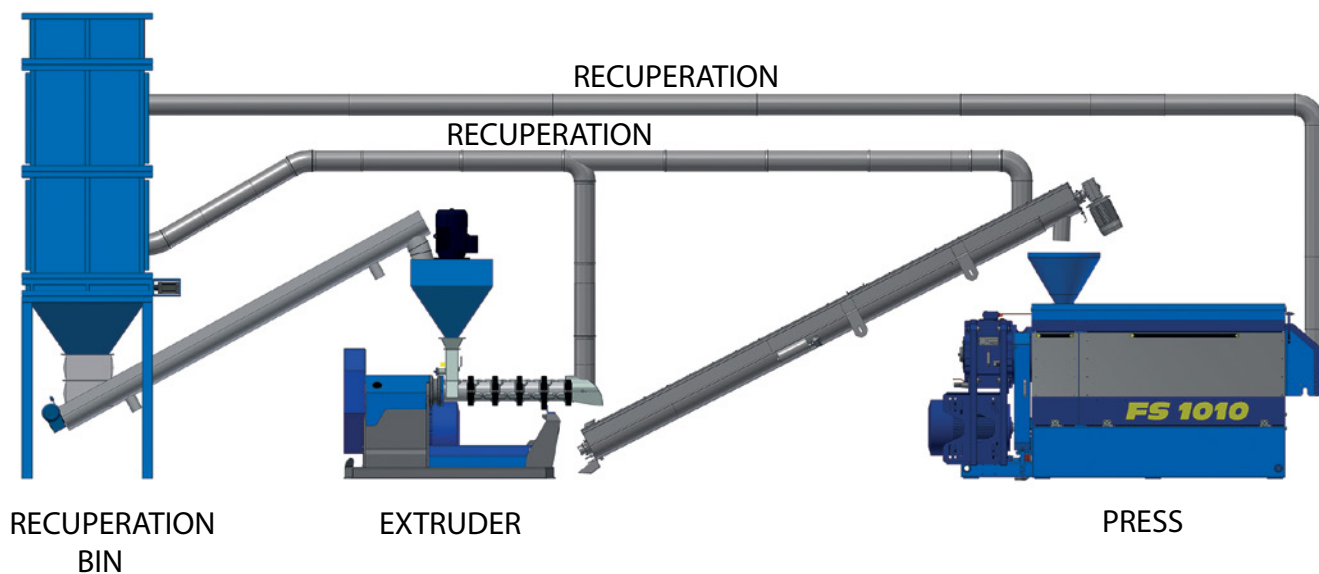


DEPENDENCE OF PROTEIN SOLUBILITY (PDI, KOH) AND UREASE ACTIVITY ON EXTRUSION TEMPERATURE.

- Optimal values for monogastric animals
- Optimal values for polygastric animals

FEED YOUR CATTLE WITH FRESH AND HIGH-QUALITY FEED.

PATENTED HIGH-EFFICIENT SYSTEM OF ENERGY RECOVERY FOR SAVING YOUR COSTS (RECU)



Technology utilizes waste heat for soybean preheating:

- Saves substantial part of electric energy
- Considerably increases production capacity
- Lowers operational costs
- Decreases resulting production costs
- Improves you competitiveness
- Shortens ROI (Return On Investment)



SAFE FOOD = SAFE FEED WITH FARMET

	Raw soybeans	Extruded soy	Extruded and pressed soy cake	Extracted soy meal
Moisture	12 %	7 %	5 %	12 %
Fat	21 %	21 %	6 – 8 %	2 %
Urease activity	2 – 10 mg N/g/min			
Protein	40 %	40 %	44 – 47 %*	40 – 48 %

* Can be increased using the OPTION of dehulling

SOYA – TRANSFORMATION OF PROTEIN FRACTIONS FOR RUMINANTS ACCORDING TO THE CORNELL SYSTEM

Fraction	Before extrusion	After extrusion	
A2	87 %	21,5 %	Protein fraction and other nitrogenous substances fully degrading in rumen.
B1	10 %	76,8 %	Protein fraction slowly degrading in rumen, partially transiting to small intestine.
B2	2 %	0,4 %	Protein fraction non-degrading in rumen, fully transiting to small intestine.
C	1 %	1,3 %	Indigestible.